

MITSUBISHI HEAVY INDUSTRIES AMERICA INC.

MITSUBISHI SERVICE PUBLICATIONS TRANSMITTAL

The attached Mitsubishi MU-2B series Service Publication has been issued by Mitsubishi Heavy Industries, Ltd. in Japan, who is the type certificate holder of the MU-2 aircraft. It is the owner and/or operator's responsibility to adhere to or comply with new information contained in the attached publication.

SL 131

SL 104/72-043

Hartzell Propeller Alert Service Bulletin HC-ASB-61-413

Export Control

These items are controlled by the U.S. Government and authorized for export only to the country of ultimate destination for use by the ultimate consignee or end-user(s) herein identified. They may not be resold, transferred, or otherwise disposed of, to any other country or to any person other than the authorized ultimate consignee or end-user(s), either in their original form or after being incorporated into other items, without first obtaining approval from the U.S. government or as otherwise authorized by U.S. law and regulations.

ECCN: 9E991

NOTE

THIS PUBLICATION IS PRINTED AND/OR DISTRIBUTED BY MITSUBISHI HEAVY INDUSTRIES AMERICA, INC., UNDER LICENSE FROM MITSUBISHI HEAVY INDUSTRIES LTD. FOR COMMENTS OR INQUIRIES REGARDING DISTRIBUTION OF THIS PUBLICATION OR RECEIPT OF ANY OF THE PUBLICATIONS LISTED HEREIN, PLEASE CONTACT:

Mitsubishi Heavy Industries America, Inc.
Aircraft Product Support Division
450 N. Freeport Pkwy Suite 3400 Coppell, TX 75019
USA

Email: mu-2support@mhia.com

THIS PAGE INTENTIONALLY LEFT BLANK



MU-2

SERVICE LETTER

MITSUBISHI HEAVY INDUSTRIES, LTD.
NAGOYA AEROSPACE SYSTEMS WORKS
10 OYE-CHO, MINATO-KU, NAGOYA, AICHI, JAPAN

JCAB T.C.: No. 131

DATE: July 10, 2026

FAA T.C.: No. 104/72-043

SUBJECT: Hartzell Propeller Alert Service Bulletin HC-ASB-61-413

MODELS AFFECTED: All MU-2B Airplanes with Hartzell Scimitar Propeller Assemblies

Hartzell Propeller, Inc. has issued its Alert Service Bulletin (ASB) HC-ASB-61-413, dated July 8, 2026, concerning Hartzell Propeller HC-E4N-5KFL lightweight turbine propellers installed on Mitsubishi MU-2B series aircraft under Federal Aviation Administration (FAA) Supplemental Type Certificate (STC) No. SA09916AC, held by Intercontinental Jet Service Corp. in Tulsa, Oklahoma. According to Hartzell, there was a report of hub cracks on an affected propeller.

In order to ensure that all MU-2 owners and operators are aware of this important safety information, MHI/MHIA is issuing this Service Letter.

Since this situation can affect flight safety, Mitsubishi Heavy Industries, Ltd. (MHI) strongly recommends that MU-2 owners and operators of MU-2B series airplanes with affected propeller assemblies comply with the procedures outlined in the Hartzell ASB, HC-ASB-61-413. If there are any questions or concerns regarding this ASB, please contact Hartzell Propeller, Inc. as directed in the ASB.

Mitsubishi Heavy Industries America, Inc.

Aircraft Product Support Division

450 N. Freeport Pkwy, Suite 3400, Coppell, Texas 75019

Email: mu-2support@mhia.com | Website: www.mu-2aircraft.com

THIS PAGE INTENTIONALLY LEFT BLANK

HARTZELL PROPELLER LLC
ALERT SERVICE BULLETIN
HC-ASB-61-413
Hub Inspection

1. Planning Information

A. Effectivity

- (1) Hartzell Propeller HC-E4N-5KFL lightweight turbine propellers are affected by this Alert Service Bulletin.
 - (a) The affected propellers are installed on Mitsubishi MU-2() aircraft under STC# SA09916AC.

WARNING: DO NOT USE OBSOLETE OR OUTDATED INFORMATION. PERFORM ALL INSPECTIONS OR WORK IN ACCORDANCE WITH THE MOST RECENT REVISION OF THIS ALERT SERVICE BULLETIN. INFORMATION CONTAINED IN THIS ALERT SERVICE BULLETIN MAY BE SIGNIFICANTLY CHANGED FROM EARLIER REVISIONS. FAILURE TO COMPLY WITH THIS ALERT SERVICE BULLETIN OR THE USE OF OBSOLETE INFORMATION MAY CREATE AN UNSAFE CONDITION THAT MAY RESULT IN DEATH, SERIOUS BODILY INJURY, AND/OR SUBSTANTIAL PROPERTY DAMAGE. REFER TO THE ALERT SERVICE BULLETIN INDEX FOR THE MOST RECENT REVISION LEVEL OF THIS ALERT SERVICE BULLETIN.

B. Concurrent Requirements

- (1) Additional service documents may apply to the components/propellers affected by this Alert Service Bulletin. Compliance with additional service documents may be necessary in conjunction with the completion of the Accomplishment Instructions in this Alert Service Bulletin. Refer to the Hartzell Propeller website at www.hartzellprop.com for a cross-reference of service documents.

C. Reason

- (1) Hartzell Propeller received a report of hub cracks on an affected propeller. Refer to Figure 1.
 - (a) The propeller reporting the cracked hub had accumulated approximately 3300 flight hours.

ALERT SERVICE BULLETIN

HC-ASB-61-413

Hub Inspection

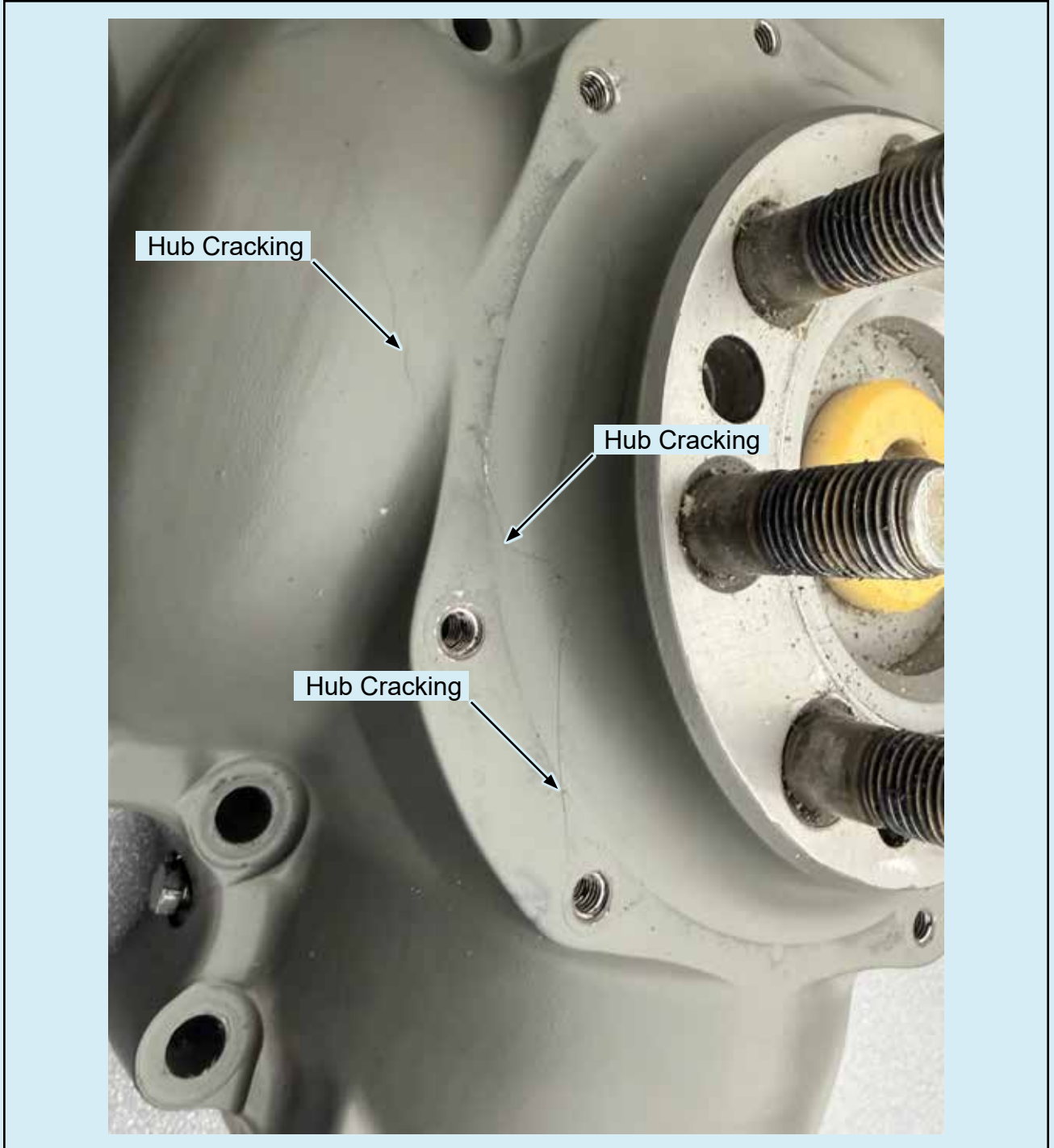


Hub Cracks
Figure 1, page 1 of 2

ALERT SERVICE BULLETIN

HC-ASB-61-413

Hub Inspection



Hub Cracks
Figure 1, page 2 of 2

ALERT SERVICE BULLETIN

HC-ASB-61-413

Hub Inspection

D. Description

- (1) This Alert Service Bulletin provides Instructions for Continued Airworthiness (ICA).
- (2) This Alert Service Bulletin provides instructions for a hub inspection of affected propellers before further flight.
- (3) Refer to the Appendix section of this Alert Service Bulletin for information about the warranty program.

E. Compliance

- (1) Before further flight perform the "Hub Inspection" in accordance with the Accomplishment Instructions section of this Alert Service Bulletin.
- (2) Within 14 days from the release date of this Alert Service Bulletin, complete the Inspection/Compliance Form in the Accomplishment Instructions section of this Alert Service Bulletin.

F. Approval

- (1) FAA acceptance has been obtained on technical data in this publication that affects type design.

G. Manpower

Procedure	Allowable Man-hours
Hub Inspection	1 hour

CAUTION: DO NOT USE OBSOLETE OR OUTDATED INFORMATION.
PERFORM ALL INSPECTIONS OR WORK IN ACCORDANCE WITH
THE MOST RECENT REVISION OF A DOCUMENT.

H. References

- (1) Hartzell Propeller Owner's Manual 149 (61-00-49)
- (2) Hartzell Four-blade Lightweight Turbine Propeller Overhaul Manual 141 (61-10-41)

ALERT SERVICE BULLETIN

HC-ASB-61-413

Hub Inspection

2. Accomplishment Instructions

A. Hub Inspection

NOTE: This procedure can be performed with the propeller on-wing.

- (1) Remove the spinner dome in accordance with the applicable Hartzell Propeller owner's manual.
- (2) Using a mirror and/or borescope, examine all areas of the hub for cracking, focusing on the flange area and hub arms of the engine-side hub half. Refer to Figure 1.

NOTE: A crack may be visible or indicated by grease leaking from a seemingly solid surface.

- (a) Report findings to Hartzell Propeller. If cracking is found, discontinue flight and contact Hartzell Propeller immediately.
- (3) Examine the propeller for excessive blade play and/or grease leaks.
 - (a) Report findings to Hartzell Propeller. If excessive blade play or a grease leak is found, discontinue flight and contact Hartzell Propeller immediately.
- (4) Complete the Inspection Compliance Form in the Appendix section of this Alert Service Bulletin.
- (5) Make an entry in the propeller logbook indicating this inspection was performed in accordance with this Alert Service Bulletin.

HARTZELL PROPELLER LLC
ALERT SERVICE BULLETIN
HC-ASB-61-413
Hub Inspection

C. Recommended Service Facilities

- (1) Hartzell Propeller LLC has a worldwide network of Recommended Service Facilities for overhaul and repair of our products.
- (2) Each service facility must meet standard FAA requirements and additional Hartzell Propeller requirements before being recommended by Hartzell. Each service facility is audited by Hartzell Propeller to verify compliance with Hartzell standards.
- (3) Hartzell Propeller recommends that you use one of these service facilities when having your propeller overhauled or repaired.
- (4) For a current list of Hartzell Propeller Recommended Service Facilities, contact Hartzell Product Support or refer to the Hartzell website at www.hartzellprop.com.

D. Contact Information

Hartzell Propeller LLC
Attn.: Product Support Department
One Propeller Place
Piqua, Ohio 45356-2634 USA
Phone: (001) 937.778.4379 (Blank Page)
Fax: (001) 937.778.4391
E-mail: techsupport@hartzellprop.com

HARTZELL PROPELLER LLC
ALERT SERVICE BULLETIN
APPENDIX
HC-ASB-61-413
Hub Inspection

1. Warranty Program Information

A. Eligibility

- (1) Hartzell Propeller HC-E4N-5KFL lightweight turbine propellers are eligible for this warranty program.
 - (a) The affected propellers are installed on Mitsubishi MU-2() aircraft under STC# SA09916AC.

B. Labor

- (1) Hartzell Propeller will authorize payment for the allowable labor charges when the Hub Inspection is performed in accordance with the Accomplishment Instructions in this Alert Service Bulletin.
 - (a) Refer to the Manpower section of this Alert Service Bulletin for warranted procedures and allowable man-hours.
 - (b) Labor charges will be reimbursed at the service facility's CURRENT POSTED SHOP LABOR RATE, pending Hartzell Propeller approval.
 - (c) Send the invoice for labor charges to Hartzell Propeller for processing.

HARTZELL PROPELLER LLC
ALERT SERVICE BULLETIN
APPENDIX
HC-ASB-61-413
Hub Inspection

Inspection/Compliance Form

Aircraft Information:	
Aircraft Model:	Aircraft Registration #:
Owner Information:	
Name:	
City:	State:
Zip/Postal Code:	Country:
E-mail:	Phone:
<input type="checkbox"/> (Check box if Operator Information is the same as Owner Information)	
Operator Information:	
Name:	
City:	State:
Zip/Postal Code:	Country:
E-mail:	Phone:
Propeller Information:	
Left Hand Propeller	Right Hand Propeller
Propeller Model:	Propeller Model:
Propeller S/N:	Propeller S/N:
Propeller TSN (Time Since New):	Propeller TSN (Time Since New):
Propeller TSO (Time Since Overhaul):	Propeller TSO (Time Since Overhaul):
Propeller Cycles (number of takeoffs/landings):	Propeller Cycles (number of takeoffs/landings):
Propeller Service History (attach additional documents if needed):	Propeller Service History (attach additional documents if needed):
Reports of unusual prop occurrences/symptoms:	Reports of unusual prop occurrences/symptoms:
Signature:	
Repair Technician's Signature:	Date:
Send this completed and signed form to Hartzell Propeller Product Support Department: Fax - (001) 937.778.4215 or E-mail - warranty@hartzellprop.com	

DO NOT WRITE BELOW THIS LINE - FOR HARTZELL PROPELLER LLC USE ONLY

Authorized By:
